

CELSR3 Antibody (monoclonal) (M01)**Mouse monoclonal antibody raised against a partial recombinant CELSR3.****Catalog # AT1492a****Specification**

CELSR3 Antibody (monoclonal) (M01) - Product Information

Application	WB, E
Primary Accession	O9NYQ7
Other Accession	NM_001407
Reactivity	Human
Host	mouse
Clonality	Monoclonal
Isotype	IgG1 Kappa
Calculated MW	358185

CELSR3 Antibody (monoclonal) (M01) - Additional Information**Gene ID** 1951**Other Names**

Cadherin EGF LAG seven-pass G-type receptor 3, Cadherin family member 11, Epidermal growth factor-like protein 1, EGF-like protein 1, Flamingo homolog 1, hFmi1, Multiple epidermal growth factor-like domains protein 2, Multiple EGF-like domains protein 2, CELSR3, CDHF11, EGFL1, FMI1, KIAA0812, MEGF2

Target/Specificity

CELSR3 (NP_001398, 71 a.a. ~ 180 a.a) partial recombinant protein with GST tag. MW of the GST tag alone is 26 KDa.

Dilution

WB~~1:500~1000

E~~N/A

Format

Clear, colorless solution in phosphate buffered saline, pH 7.2 .

Storage

Store at -20°C or lower. Aliquot to avoid repeated freezing and thawing.

Precautions

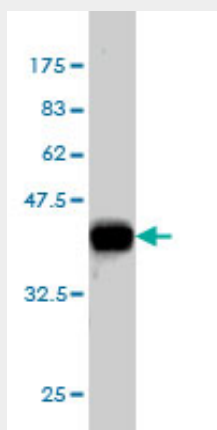
CELSR3 Antibody (monoclonal) (M01) is for research use only and not for use in diagnostic or therapeutic procedures.

CELSR3 Antibody (monoclonal) (M01) - Protocols

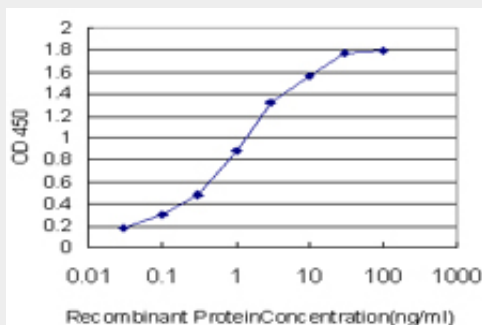
Provided below are standard protocols that you may find useful for product applications.

- [Western Blot](#)
- [Blocking Peptides](#)
- [Dot Blot](#)
- [Immunohistochemistry](#)
- [Immunofluorescence](#)
- [Immunoprecipitation](#)
- [Flow Cytometry](#)
- [Cell Culture](#)

CELSR3 Antibody (monoclonal) (M01) - Images



Antibody Reactive Against Recombinant Protein. Western Blot detection against Immunogen (37.84 KDa) .



Detection limit for recombinant GST tagged CELSR3 is approximately 0.03ng/ml as a capture antibody.

CELSR3 Antibody (monoclonal) (M01) - Background

The protein encoded by this gene is a member of the flamingo subfamily, part of the cadherin superfamily. The flamingo subfamily consists of nonclassic-type cadherins; a subpopulation that does not interact with catenins. The flamingo cadherins are located at the plasma membrane and have nine cadherin domains, seven epidermal growth factor-like repeats and two laminin A G-type repeats in their ectodomain. They also have seven transmembrane domains, a characteristic unique to this subfamily. It is postulated that these proteins are receptors involved in contact-mediated communication, with cadherin domains acting as homophilic binding regions and the EGF-like domains involved in cell adhesion and receptor-ligand interactions. The specific function of this particular member has not been determined.

CELSR3 Antibody (monoclonal) (M01) - References

Systematic identification of SH3 domain-mediated human protein-protein interactions by peptide

array target screening. Wu C, et al. Proteomics, 2007 Jun. PMID 17474147. A human protein-protein interaction network: a resource for annotating the proteome. Stelzl U, et al. Cell, 2005 Sep 23. PMID 16169070. The human and mouse repertoire of the adhesion family of G-protein-coupled receptors. Bjarnad?ttir TK, et al. Genomics, 2004 Jul. PMID 15203201. Generation and initial analysis of more than 15,000 full-length human and mouse cDNA sequences. Strausberg RL, et al. Proc Natl Acad Sci U S A, 2002 Dec 24. PMID 12477932. Protein-protein interactions between large proteins: two-hybrid screening using a functionally classified library composed of long cDNAs. Nakayama M, et al. Genome Res, 2002 Nov. PMID 12421765.